

Coorong National Park

Secrets

Ngrugie Ngoppun Loop Walk Salt Creek

This easy short walk commences in the heart of Salt Creek and follows a path through low scrub to the point at which the Salt Creek enters the Coorong. Abundant birdlife is a feature of this walk and can be viewed from a number of vantage points along the length of the trail. Panoramic views of the southern Coorong lagoon and sand dunes of the Youngusband Peninsula are provided at the headland.

Start:

Make your way along the Princes Highway to Salt Creek. The walk commences opposite the replica oil rig and adjacent to an information sign and picnic table. Parking is available by the rig. The walk proceeds in an anticlockwise direction. As most of the track is exposed to full sun, the walk is best undertaken in cooler months.

Distance:

3.5 kilometres (including loop to boat-ramp/headland) – a 1.5 hour leisurely stroll.

What to take:

Camera, binoculars, plant and bird identification handbook or download a [Waders of the Coorong and Lower Lakes](#) brochure.

The walk is mainly in full sun so apply sun protection and take some water with you.

Vehicle access to the boat ramp:

For those looking to launch a boat or to just visit the weir, a 4WD track (accessible by 2WD in the dryer months) commences 250 meters to the north of the start of the walking trail. The boat ramp is suited to shallow draft boats only. Parking space is available by the boat ramp and by the weir.



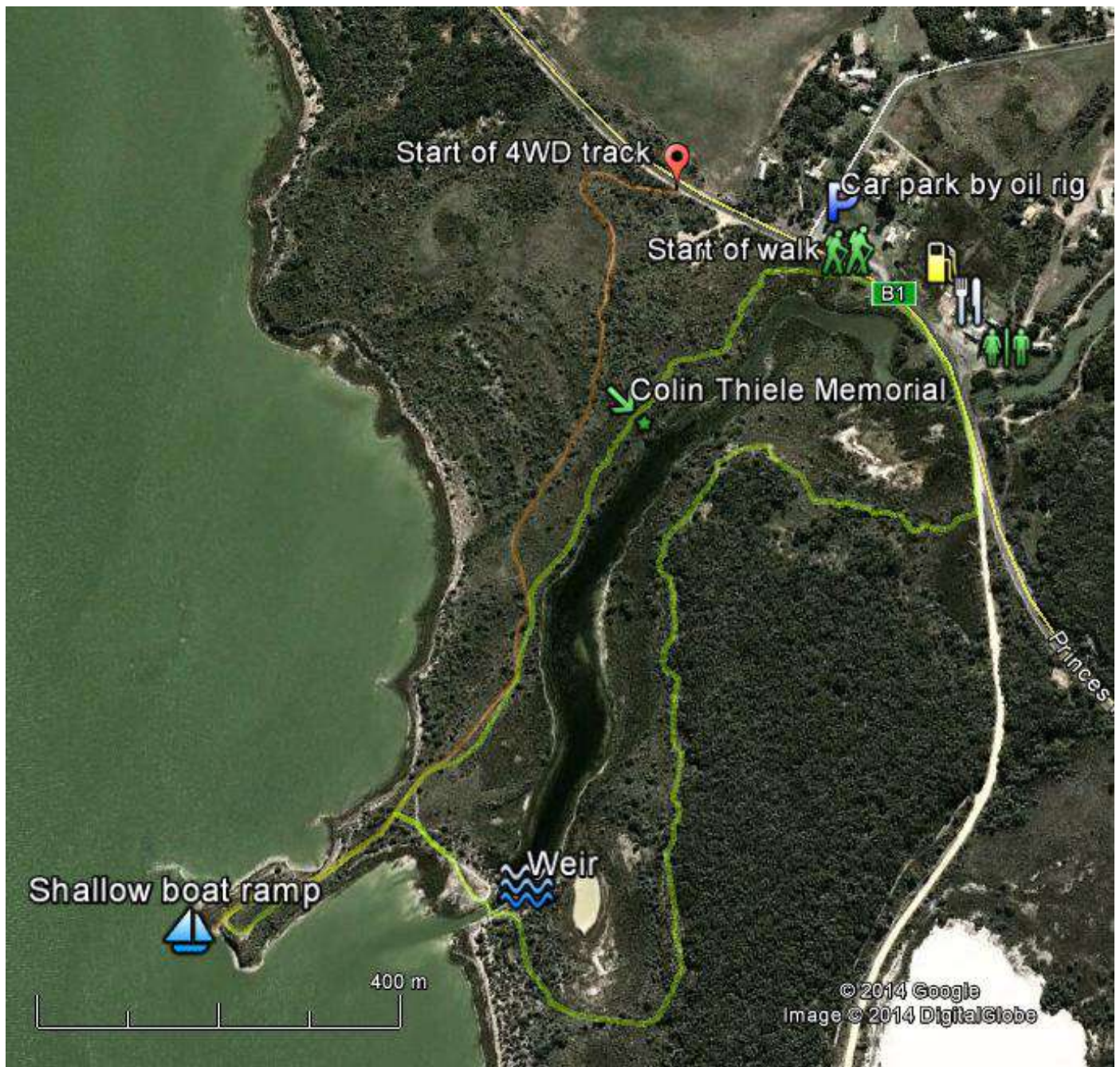
Colin Thiele memorial



Weir crossing



Australian Shelducks on Salt Creek



General information:

Apart from the first 50 meters which can be boggy, the walk is generally easy to traverse. The first half of the walk past the shallow boat ramp and over the weir is of compacted sand and is generally well defined. This section of the trail is signposted. The second half of the trail from the salt lake (east of the weir) to the Princes Highway is less defined and slightly rocky underfoot. Short sections of the track transgress wooded areas but most of the track is out in the open. 300 metres past the weir the track takes a sharp turn to the left. A track off to the right continues on to camping spots and to the Lakes Nature Trail. The final section of the walk returns back past the roadhouse along the Princes Highway. A picnic table and information sign are located on the Princes Highway at the start/end of the walk. There are two seats along the way. Camping is available at the roadhouse and at nearby locations within the National Park. Refreshments, fuel and toilets are available at the roadhouse.